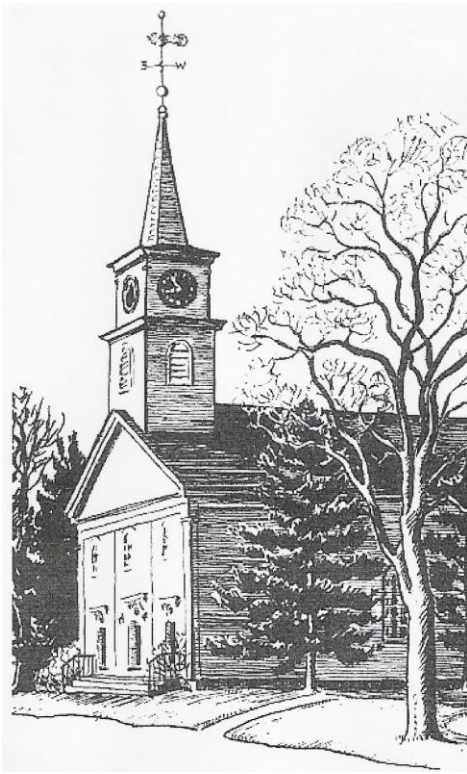


The Spire



The Newsletter of
First Parish of Norwell

24 River Street

P.O. Box 152

Norwell, Massachusetts 02061

phone 781-659-7122

fax 781-659-7939

March 9, 2016

Volume XIV, Issue 11

www.firstparishnorwell.org

Sunday Services - 10:00 am

Rev. Lise Adams Sherry preaching
unless otherwise indicated

March 13:

Union Sunday at First Parish in Cohasset, 10 am

(Don't forget to change your clocks! It's time to "spring forward.") It's our annual service where the five congregations who have their roots in the Scituate congregation gather together to celebrate our common identity and heritage. The First Parish Meetinghouse is located on the Cohasset Common at 23 North Main Street and parking is available on both sides of the street on Main Street and all around the Common. In addition there are two parking lots, one next to Town Hall a block behind and to the right of the church. The other lot is behind the first block of village stores on the west side of Main Street. It is a five minute walk north to the church.

March 20: **Palms for Oscar Romero**

An Archbishop of San Salvador, Romero surprised many by championing the poor and underprivileged *after* his appointment. Like Jesus, he worked on behalf of the ordinary person, and he met a similar fate. After this service, we'll have a communion in honor of Jesus' last supper for those who would like to participate.

March 27: **Easter Sunday**

This multigenerational service will be led by Rev. Lise and Julian Baptista, DRE. We'll celebrate new beginnings and building beloved community as so many of our prophets have encouraged us to do.

April 3:

Women of First Parish and Beyond, Making Unitarian Universalism Strong

How has the First Parish's (Women's) Alliance contributed to our congregation and how have similar movements and women participated in our larger religious tradition? The service will be led by Rev. Lise and Sue Robinson.

OFFICE HOURS (September to mid-June):

Closed on Mondays

Tuesday, Wednesday, Thursday: 9 am-1 pm

Friday: 9 am-12 pm

PHONE: 781-659-7122

FAX: 781-659-7939

HOME PAGE: www.firstparishnorwell.org

Minister:

Rev. Lise Adams Sherry, x11

lisherry@uuma.org

Director of Religious Education:

Julian Baptista, x12

dre@firstparishnorwell.org

Music Director: Gingy Grimes

Office Staff:

Hope Weinman, Office Administrator, x10

office@firstparishnorwell.org

Donna McDonald, Bookkeeper, x14

donna@firstparishnorwell.org

Parish Committee 2015-2016:

Co-Chairs: Jim Pickel and Deanna Riley

Members:

Noel Constantino, Sue Keady, Mary Nickerson,
Elizabeth Robey and Les Taylor

Treasurer: Marta Reese

Minister Emeritus: Rev. Richard M. Fewkes

The deadline for the next issue of THE SPIRE is **Monday, April 4, 2016**. Submissions may be emailed to Hope at office@firstparishnorwell.org, or dropped off in the church office.

LISE'S LETTER

Well, we've had the Massachusetts primary and our election season is really rolling. It was fun for me this year to be living in a state that does things a bit earlier. More than that, I and all of you, contributed to Super Tuesday! In Oregon where I grew up, the primaries aren't until May and by that time, presidential candidates are often unofficially decided. All that's left is for the respective conventions to give their candidates a kiss of approval. Living in a state with such a late primary date, it sometimes felt like we completely missed the conversation. And yes, Oregon, and other states, can change their primary dates, but shouldn't something so important involve listening to as many voices as possible?

I recently spoke with Norwell's Town Clerk and she said that Norwell's primary was unusually busy last week. Instead of the regular 18-19% voter turnout, Norwell had a 51% turnout! (Give or take a few points and making allowances for my memory.) People obviously want to be heard, and it appears like many races are still very close. I'm mentioning this, because when I was candidating with First Parish, one of the things folks were concerned about was talking about politics. I understand this because UUs are often associated with Democrats and the Left, and yet we want to be inclusive and welcoming. This can be difficult if not everyone agrees with that perspective, and in every congregation I've served, there have been beloved members and friends who place themselves more to the right politically.

So here's what I suggest: ask each other respectful, calm questions and then... *listen*. This is a fact finding mission, not an opportunity for conversion. Think about your body language, too. Try not to show impatience or "harrumph." Remember the person you're speaking with might think your ideas are just as ludicrous as you think theirs are. Here's another idea that might be making things too simplistic, but try thinking



about it this way. If someone said their favorite ice cream flavor was strawberry, most people wouldn't try to convince them otherwise. They might ask clarifying questions or simply store the knowledge away. Or, if someone they like and care for really likes strawberry, they might decide to try it too.

One of our favorite UU sayings is "We need not think alike to love alike" and this is true. But sometimes I think we go straight to that saying without trying to better understand the other person's perspective. How did they come to that belief, what are their concerns, were there life experiences that shaped their opinion? Beloved Community is more than mutual tolerance, it's also about common experiences, inclusion and understanding... even if in the end we don't agree. Let's take a deep breath, and try to make it so.

Love, Lise

PS: Speaking of deep breaths, I'm in the process of developing a **monthly evening of meditation practices to begin sometime in April**. If you're interested, please let me know. As well, **Path to Membership** classes will take place on **Sunday, April 10 and 17**, from 11:30 am until 1 pm in Fogg Parlor. Please ask Rev. Lise if you have questions about these classes.



CARING CORNER

Sympathies are extended to Linda Goodwin and family on the recent death of Linda's aunt.

Peter and Roberta Fairbanks are delighted to announce the birth of a granddaughter, Emma Lynn Fairbanks, born on February 29th (Leap Day!) to their son Ross and his wife Sarah. Emma joins 18-month-old Brooke Elizabeth. The happy family lives in Marshfield.

John Marsh is doing well following his heart surgery and will be transferring from Queen Anne's nursing home to his home in Scituate this week. He welcomes you visits and calls. Do not hesitate to just "drop by" to say hello.

Continued good news and progress for Noel Constantino as she recovers from the third operation for a torn retina.

Healing thoughts go to Staci Carey, who is home recovering from planned surgery.

Erin Puleio is in need of moving boxes and will happily accept any you might wish to provide. Bring them to church or call Erin at 781-588-7253 to make other arrangements.

Help us to keep in touch, celebrate the happy moments in life and support you during the difficult times. Please send your news to Hope Weinman in the Church Office at office@firstparishnorwell.com, or contact any member of the Pastoral Care Team (Sue Robinson, Rev. Lise Adams Sherry, Marcia Babcock, Noel Constantino, Betsey Detwiler, Joanne Howard and Joyce Hockman).



WHO YOU GONNA CALL? COSM!

The Committee on Shared Ministry (COSM) was established early in the church year to support and advance the ministry of the Parish, including worship, religious education, pastoral care and outreach. Bernie Gardner is chair; Scott Garland, Betsy Gordon, Ellie Handleman, Kevin Houston and Marie Miller comprise the rest of the committee, with Rev. Lise serving as an ex-officio member. Conflict resolution was identified as a skill set that our congregation would benefit from developing further. The committee has been hard at work articulating processes for addressing difficulties within our community. When this document has been finalized it will be posted on the First Parish website, and COSM will

share that link in another Spire column. We are also working on creating a comment/suggestion box: keep your eyes on the space to the left of the entrance to the sanctuary from the Parish Hall, it will be appearing soon! In the meantime, please feel free to approach members of this committee with concerns or kudos about how we as a church are fulfilling our mission, or suggestions about ways to do it better. If you don't know what our mission is, check out article 2, section 2 of the parish by-laws, which can be found on the website at <http://www.firstparishnorwell.org/bylaws.html>.



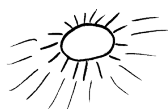
HELP STOCK OUR FREEZER!

The Pastoral Care Team would appreciate your contributions of casseroles to freeze and have available for emergency use by parishioners. Please label your disposable container with the date, contents and preparation/heating instructions. Labels are available on the door of the refrigerator in the kitchen. Questions? See any member of the Pastoral Care Team, listed in the Caring Corner article on page 3.

Award. The child or youth will receive a certificate acknowledging their achievement and dedication in front of the congregation, along with a chalice bracelet hand made by Julian.

On **March 13** after the Union Sunday service, we will be sharing a meal with the residents of the Carolina Hill homeless shelter. This is a great way to do service, and to connect with our neighbors in need. Please sign up to bring food, drinks, or other supplies with Mandy Metzger or myself.

For adults, we have a new Adult RE class starting in April. On the **2nd and 4th Wednesdays** of each month (first meeting is April 13) from 7-8:30pm, through the end of the church year, I will be leading a program called "Spirit of Life" on UU spirituality. Spirit of Life workshops offer participants space, time, and community to explore their Unitarian Universalist spirituality. Each focuses on a different aspect of the spiritual life, framed by the lyrics of Carolyn McDade's song "Spirit of Life." Like the song, the workshops are designed to be welcoming to Unitarian Universalists of many spiritual and theological persuasions. Participants are invited to claim an inclusive definition of spirituality and recognize the spiritual aspects of their lives. Reflecting, speaking, and listening are core activities in each workshop.



FROM THE DRE



This month in RE, we'll be starting our **2nd Sunday School** semester! We'll be back to our regular classes, with our new slate of amazing teachers after Union Sunday.

Finally, get practicing for our First Parish Talent Show! On **Saturday, April 9** you can share your considerable talents with your First Parish family. Whether you're a singer, a dancer, a magician, or anything else, come on out and show us what you can do!

Our second semester of Sunday School is starting on March 20, and this semester we're starting back up an older tradition at First Parish that we're calling the Attendance Award. From now until the end of June, every child or youth who attends 11 of the remaining 14 Sundays will win our Attendance

See you at church!
Julian Baptista
Director of Religious Education



PLEDGE DRIVE UPDATE

Dear Parish Members:

We wanted to report the canvass results to date, and take this opportunity to thank everyone that has responded to the FY17 Pledge Drive. We so appreciate all your contributions so far!! As of last Friday (March 4th), we had received 68 responses from the 105 letters that were sent. Additionally, we received 4 pledges from people that we did not canvass.

| | Member Pledges | Matching Funds | Total Pledges |
|----------------------|----------------|----------------|---------------|
| Letters Sent: 105 | | | |
| Pledges Received: 72 | 111,894.00 | 6,647.00 | 118,541.00 |
| Goal | 170,000.00 | | |
| % of Goal Achieved | 65.82% | | |

Of the 72 pledges received, we are so pleased to report that 44 pledges increased and were eligible for matching funds.

| | | |
|---------------------------|----|------------|
| New Pledges | 5 | 4,252.00 |
| Pledge Increases | 44 | 79,542.00 |
| Pledge Decreases | 3 | 5,430.00 |
| Pledges-same as last year | 20 | 22,670.00 |
| Total | 72 | 111,894.00 |

As you can see from the summary below, matching funds in the amount of \$1,453 are still available, and, of course, we are hoping that the balance will be utilized by some of the outstanding pledges.

| | |
|-----------------------|----------|
| Matching Funds | 8,100.00 |
| Pledge Increases | 6,647.00 |
| Matching Fund Balance | 1,453.00 |

Unfortunately, we still have about 37 pledge units that have not responded. This is an important number for us as we are about to enter our budget process for the upcoming year. Of course, some cannot pledge or have some problem that has prevented them from responding, but this seems like a very large number of non-pledgers. Last year, we canvassed 116, and only 13 did not respond. If you are among the “missing”, it would help us greatly if you could call Hope in the Church

Office at 781-659-7122 Tuesday through Friday before 1:00 pm, email her at office@firstparishnorwell.org, or perhaps have a conversation with any Finance Committee member. Whether or not you can contribute, please check in.

Again, thank you to all who have responded to the FY17 Pledge Drive!

With appreciation from the Finance Committee, Laurie Brown, Larry Baker, George Atkinson, Prue Miller, Peg Kitchenham, John Carpenter, and Marta Reese and Rev. Lise.



LEAVING ON A JET PLANE...

Hope will be out of the office (and in Florida!) March 15-18, and will return on Tuesday, March 22.



FAMILY MOVIE NIGHT & SING-A-LONG

Get ready to sing on **Saturday, March 19!** We will be hosting a “Jesus Christ Superstar” sing along! Bring a friend, and sing all night (or at least for a couple hours) to the soundtrack of this great musical. We’ll have the words, you bring the robes. Join us in the Parish Hall at 7 pm. Bring your own beverages, and feel free to bring a snack to share.

SPRING GOLF TOURNAMENT

Save the date! The annual FPN golf tournament will be held on **Saturday, May 14** at Squirrel Run in Plymouth, followed by a dinner served that night in the Parish Hall. More details to follow.

EASTER BREAKFAST



Bring your whole family for a super breakfast served before church on Easter morning (Sunday, March 27), from 8:45 to 9:50 am.

The cost is \$3.00 per adult or \$2.00 per child. The casseroles are back - help is needed! We will supply a recipe for a ham and egg or vegetable casserole (and a foil pan) which you bake at home and bring in by 8:30 am. Or, you can make or buy a coffee cake. We also need servers and people to clean up. We will set up the Parish Hall on Saturday morning. To volunteer to help in any way, call Peg Kitchenham (781-447-5831) or speak with her at Coffee Hour. Please note that there is *no Coffee Hour* after church on Easter Sunday.

GREETERS WANTED!



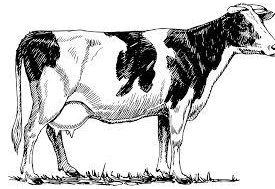
The Membership Committee is seeking friendly faces to join a team of greeters. We are hoping to gather 8 or so people as rotating greeters

at First Parish. Yes, you qualify! Greeters will work in teams of two welcoming friends to church, answering visitors' questions, welcoming newcomers to our community, welcoming back members of yesteryear... and meeting some interesting and wonderful people. (Please note that this is different than ushering.) Questions? Interested? Ideas? Please email Gabe Carroll at gabecarroll@gmail.com, or let's talk at church. Thank you!



LIFETOUCH DIRECTORY UPDATE

Good news - the new church photo directories should be in by the end of the month!



COWSPIRACY: THE SUSTAINABILITY SECRET MARCH 11 - 7:30 PM PARISH HALL

- Animal agriculture is responsible for 18% of greenhouse gas emissions, more than the combined exhaust from all transportation.
- Agriculture is responsible for 80-90% of US water consumption.
- Livestock or livestock feed occupies 1/3 of the earth's ice-free land.

Come learn more at a free screening on **Friday, March 11** at 7:30 pm in the Parish Hall of *Cowspiracy: The Sustainability Secret*, a groundbreaking feature-length environmental documentary following intrepid filmmaker Kip Andersen as he uncovers the most destructive industry facing the planet today - and investigates why the world's leading environmental organizations are too afraid to talk about it. Visit <http://www.cowspiracy.com/> for more information.



ALLIANCE NEWS

The Alliance is pleased to welcome back John Galluzzo as its speaker in March. The meeting will be on **Wednesday, March 16** at 10 am in the Parish Hall. John, a well-known local naturalist, historian and writer will be speaking on "The History of Gardening in New England". Members and friends of the Church are always invited to Alliance meetings. Refreshments will be served at 10 followed by a short business meeting and then John's program. Hope to see you there!





STAY CONNECTED!

If you would like to be added to the distribution list for all-church emails, the monthly Spire newsletter and the weekly iSpi, or if your email address has changed, please contact Hope in the Church Office at 781-659-7122 or office@firstparishnorwell.org. If you would like to receive the monthly Spire but don't use a computer, Hope will be happy to send you a copy via U.S. Mail.

Julian Baptista, our Director of Religious Education, sends out weekly reminders to families enrolled in the RE program. Please email him at julianbaptistamusic@gmail.com if you would like to receive those emails.

Our website (beautifully maintained by Debi and John Meddaugh!) is a great resource as well. Visit www.firstparishnorwell.org, and be sure to add it to your bookmarks.

We also have a FPN Facebook page, where you can view photos of church events, learn more about UU's and connect with your fellow FPN'ers. Visit our website, click on the little "f" in the top right hand corner, and then "like" our page. (If you don't have a Facebook account, you can still view our page.)

Finally, please make sure the Church Office has your current mailing address. We do occasionally send out mailings to our members and friends.



BOOK GROUP

All are welcome at the next meeting of the First Parish Book Group on **Wednesday, April 6** at 7 pm in the Fogg Parlor. We will be reading *Dead Wake: the Last Crossing of the Lusitania* by Erik Larson. On May 1, 1915 the *Lusitania* set sail on its final voyage. That it was sunk by a German U-boat will be news to

few. Focusing on the politics of WWI, on nautical craftsmanship and strategy, and on key players in the eventual attack and sinking of the "fast, comfortable, and beloved" *Lusitania*, the author illustrates his gift for seducing us with history and giving it a human face.



JAMES LIBRARY AND CENTER FOR THE ARTS

Upcoming events:

Sunday, March 13 at 5 pm
"Friends in Song" - an a cappella vocal performance. \$20 suggested donation at the door

Friday, March 18 at 7 pm
"Mozart: Classical Perfection"
Lecture/recital by Janna Bruene and Alison Barr. Free, but donations accepted at the door.

Friday, April 1 at 7:30 pm
Story Slam

Sunday, April 3 from 4 to 6 pm
Opening Reception (free) in the Gallery for artist Marcia Ballou.

Friday, April 8 at 7:30
Lecture by Michael Tougias, author of "The Finest Hours". Please note that this event will be held in our Parish Hall.

For more information on any events at the James, or to purchase tickets, please visit www.jameslibrary.org or call 781-659-7100.

I know of no other endeavor where a man can be successful three times out of ten and still be considered somewhat proficient.

~Ted Williams, on baseball

CALENDAR
March/April 2016

| SUNDAY | MONDAY | TUESDAY | WEDNESDAY | THURSDAY | FRIDAY | SATURDAY |
|---|----------------------|---|---|---|--|--|
| 13 Union Sunday Service at First Parish Cohasset 10 am Finance Comm., FP 11:30 am RE Trip to Carolina Hill, 12-2 pm | 14 AA, PH 8:30 pm | 15 Tai Chi, PH 9:15 am Knitters, FP 9:30 am Parish Committee, FP 7 pm Ballroom Dance Class, PH 6-8 pm | 16 Alliance, PH 10 am "Gardening in New England" Ballroom Dance Class, PH 7-9 pm | 17 Choir Rehearsal, Sky.7:30 pm Ballroom Dance Class, PH 6-8 pm  | 18 Ballroom Dance Class, PH 7-9 pm | 19 Piano Lessons, MH 9 am-5 pm "Jesus Christ Superstar" Sing-a-long, PH 7 pm  |
| 20 Morning Service & Church School 10 am Communion Service, MH 11 am Coffee Hour, PH 11 am Helen Fogg Service Comm, FP 11:30 am | 21 AA, PH 8:30 pm | 22 Knitters, FP 9:30 am | 23 Adult RE "Share Your Story", FP 7 pm Ballroom Dance Class, PH 7-9 pm | 24 Staff Meeting, Ofc. 10 am Choir Rehearsal, Sky.7:30 pm Ballroom Dance Class, PH 6-8 pm | 25 | 26 Easter Breakfast Set-up, PH 10 am |
| 27  Easter Breakfast, PH 8:45 am Morning Service & Church School 10 am | 28 AA, PH 8:30 pm | 29 Knitters, FP 9:30 am Ballroom Dance Class, PH 6-8 pm | 30 Ballroom Dance Class, PH 7-9 pm | 31 Choir Rehearsal, Sky.7:30 pm | 1 Game Night/ Potluck, PH 6-9 pm  | 2 |